

5205L

TENSION LOAD CELL

- Tension mounting
- Available capacities from 0.5 to 15 tons
- Sturdy design
- Available in stainless steel
- Breaking load > 500%
- Protection IP 67
- A complete range of electronics, load limiters and displays are also offered "CE" certified
- "EEx" ia II C T4/T6 version available
- Available with amplifier 4-20mA or 1-5 VDC



Model 5205L – 5t & 10t

The SENSY's load cell 5205L is perfectly designed to the following applications :

- Tension force measurement on cranes and hoisting devices
- Hoisting and crane's security in combination with a load limiter (BRIDGEBOY, CRANEBOY, ...)

AVAILABLE CAPACITIES :

5205L : (0.5) - 0.75 - 1.5 - 3 - 5 - 10 - (15) t

TECHNICAL DATA		
Accuracy class		SL
Linearity error	% F.S.	< ± 1
Hysteresis error	% F.S.	< ± 0.5
Non - repeatability	% F.S.	< ± 0.25
Creep error over 30 min.	% F.S.	< ± 0.2
Zero shift after loading	% F.S.	< ± 0,05
Reference temperature	°C	23
Nominal temperature range	°C	- 10...+ 45
Service temperature range	°C	- 30...+ 70
Storage temperature range	°C	- 50...+ 85
Temperature coefficient of the sensitivity	% /10°C	< ± 0.1
Temperature coefficient of zero signal	% F.S./10°C	< ± 0.1
Nominal sensitivity	mV/V	1
Zero balance	mV/V	± 0.02
Sensitivity tolerance (g=9,8107 m/s ²)	%	< ± 0.5
Input / Output resistance	Ohm	350 ± 20
Insulation resistance (50V)	MOhm	> 5000
Nominal excitation voltage	V	5 to 10
Nominal range of the excitation voltage	V	2...15
Safe load limit	% F.S.	200
Breaking load	% F.S.	> 500
Static lateral force limit	% F.S.	10
Permissible dynamic loading	% F.S.	70

F.S.: full scale Specifications subject to change without notice

LOAD CELL

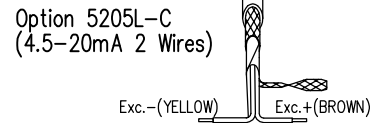
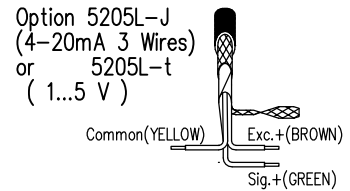
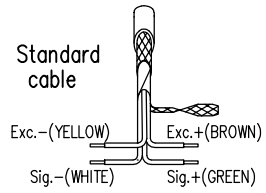
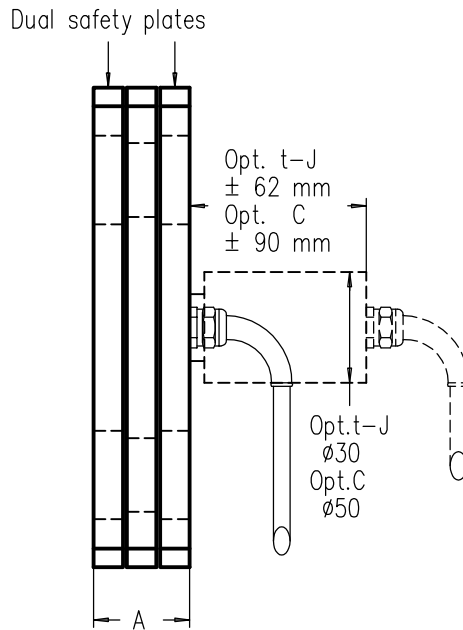
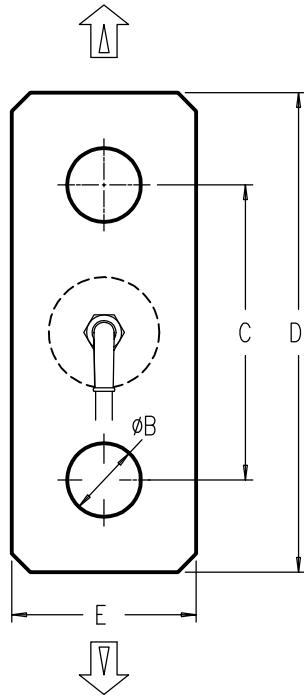
model 5205L alloy steel

HOISTING TENSION LOADCELL

Range 0.5–15t. Breaking limit: >500%

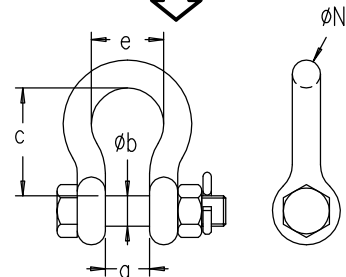
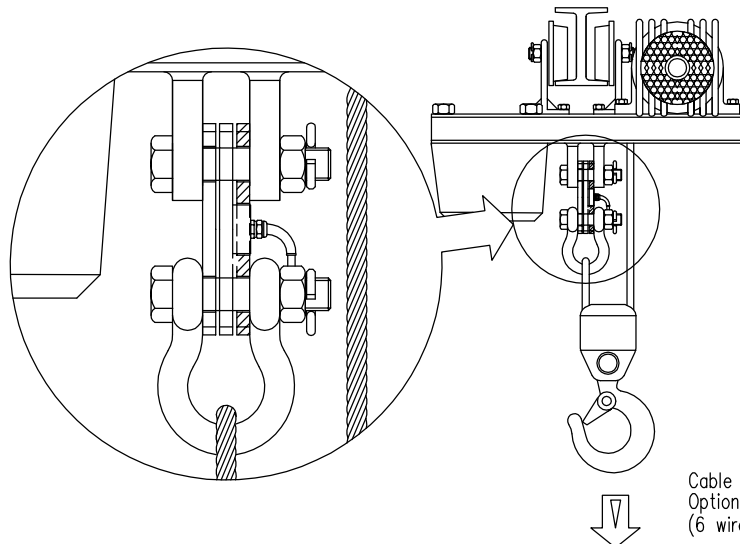
Cable length : 3 m

-IP 66



NOMINAL CAPACITIES (1mV/V)	USER LIMITS	DIMENSIONS				
		A±1 *	øB*	C	D	E
500 kg	325 - 650 kg	13	11.5	65	94	40
750 kg	500 - 950 kg					
1.5 t	1 - 1.9 t.	20	16.5	65	105	40
3 t	2 - 3.75 t.	25	19.5	90	135	50
5 t	3.3 - 6.35 t.	35	26	110	175	60
10 t	6.6 - 12 t.	47	36	185	275	80
15 t	10 - 19 t.	47	42	195	300	100

OPTION : FORGED SHACKLES					
SWL	a	øb	c	e	øN
1 t	16.8	11.2	36.5	26.1	9.65
2 t	20.6	16	47.7	33.3	12.7
3.25t	26.9	19.1	60.5	42.9	17.5
6.5 t	36.6	25.4	84	58	24.6
12 t	51.5	35.1	119	82.5	33.1
17 t	60.5	41.4	146	98.5	41.2



SWL : Safe Working Load

Cable screen not connected to transducer
 Option f : Cable screen connected to transducer
 (6 wires cable in option)
 Cable screen connected to transducer for option t,C,J

Rev.16/3/2005