

5500

LOAD CELL ON CABLE

- Easy to mount directly on the anchor point of the crane
- Alloy steel (Stainless Steel available)
- Protection IP 65
- Available with integrated amplifier 4-20 mA or 1-5 Volt
- A complete range of electronics, load limiters and displays are also offered "CE" certified
- "EEx" ia II C T4/T6 version available
- Very large range of cable suitable (from diameter of : 6 to 45 mm)
- Reliable and economical solution



Model 5500 + accessories

The SENSY's load cell 5500 is perfectly designed to the following applications :

- Especially designed for equipment of existing cranes
- Hoisting and crane's security in combination with a load limiter (BRIDGEBOY, CRANEBOY, ...)
- Very easy and fast installation

AVAILABLE CAPACITIES :

5500 : 0.25 ton to 24 tons on the cable

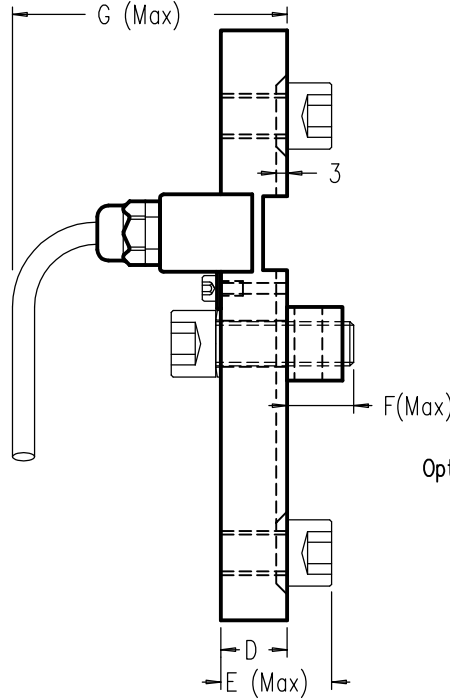
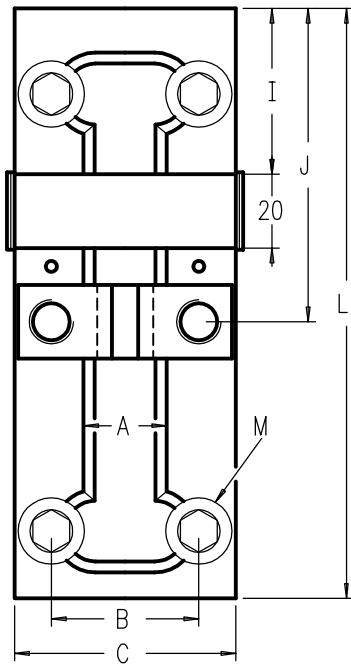
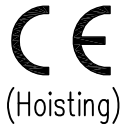
LOAD CELLS

model 5500

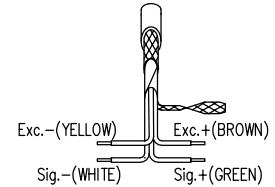
LOAD CELL ON CABLE

Range cable ϕ 6–45 mm IP65

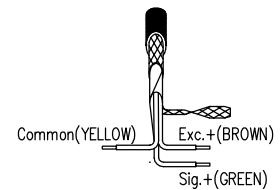
Cable length : See table (CL)



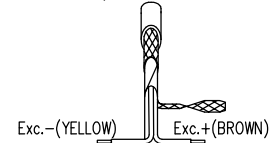
Standard cable



Option 5500J (4–20mA 3 Wires)
or 5500t (1...5V)



Option 5500C (4.5–20mA 2 Wires)

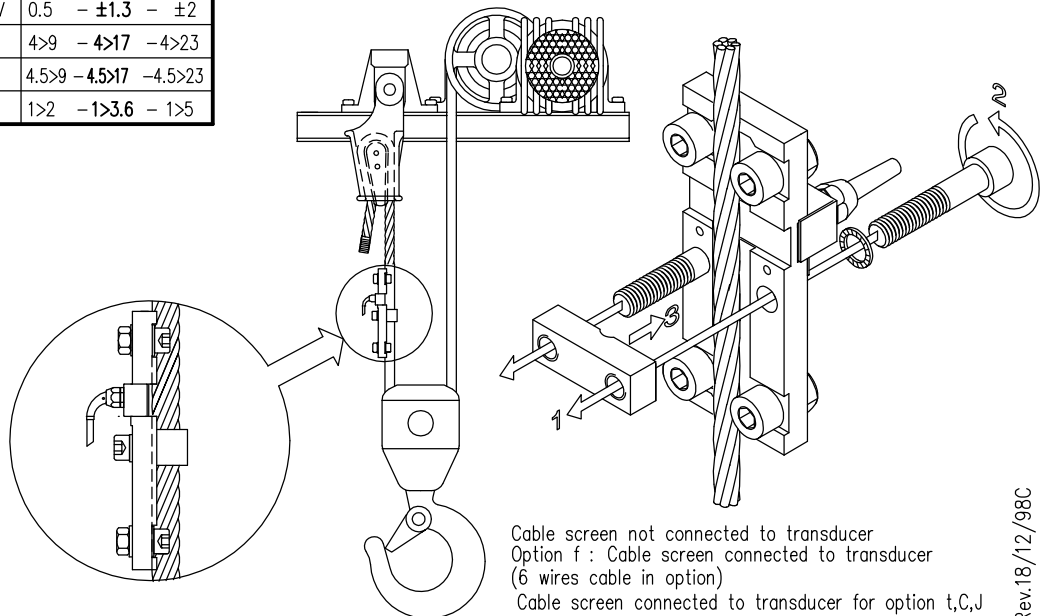


MODEL	CABLE ϕ (mm)	LOAD t.(2) min–NOMINAL–max												Torque		CL(m)	
			$\pm A$	B	C	D	E	$\pm F$	G	I	J	L	M	(Optimum)			
5500/1TTSA(3)	/1TTSI 6–12	0.25 – 0.8 – 1.2														10 Nm	3
5500/1TSA(1)	/1TSI 6–14	0.4 – 1.1 – 1.5	20	40	60	18	30	31	100	45	85	160	M12	15 Nm			
5500/1SA (1)	/1SI 10–16	0.75 – 2 – 2.8															
5500/1A (1)	/1I 12–20	1.6 – 3.5 – 5															
5500/2A (1)	/2I 18–26	2 – 5 – 7	20	50	75	18	30	40	100	45	85	160	M12	20 Nm	3		
5500/3A	/3I 26–36	5.5 – 10 – 16	25	68	100	25	41	55	115	55	95	200	M16	25 Nm	6		
5500/4A	/ 35–45	10 – 15 – 24	35	75	115	26	46	70	116	55	110	230	M20	50 Nm			

5500 mV/V	0.5 – ± 1.3 – ± 2
5500J mA	4>9 – 4>17 – 4>23
5500C mA	4.5>9 – 4.5>17 – 4.5>23
5500t V	1>2 – 1>3.6 – 1>5

Stainless steel

- (1) Alloy steel=Label VGS
- (2) Table detailing sensitivity and SENSY electronics limits for each cable diameter, available upon request
- (3) Only in version 5500J 4–20 mA 3 wires



Cable screen not connected to transducer
Option f : Cable screen connected to transducer (6 wires cable in option)
Cable screen connected to transducer for option t,C,J

Rev.18/12/98C