

5600

CUSTOM MADE LOAD PIN

- Double shear beam axle
- Sturdy design
- Stainless steel
- Easy to install
- Protection IP 65 (IP 67 available)
- A complete range of electronics, load limiters and displays are also offered "CE" certified "EEx" ia II C T4/T6 version available
- Available with integrated amplifier 4-20mA or 1-5 VDC



Model 5600

The SENSY's load pin 5600 is perfectly designed to the following applications :

- Cranes pulley equipment
- Hoisting and crane's security in combination with a load limiter (BRIDGEBOY, CRANEBOY, ...)
- Equipment of shackles, wedge sockets and hydraulic jacks...
- Force measurement on cylinders and others applications

AVAILABLE CAPACITIES :

5600 : 0.5 to 6.3 tons

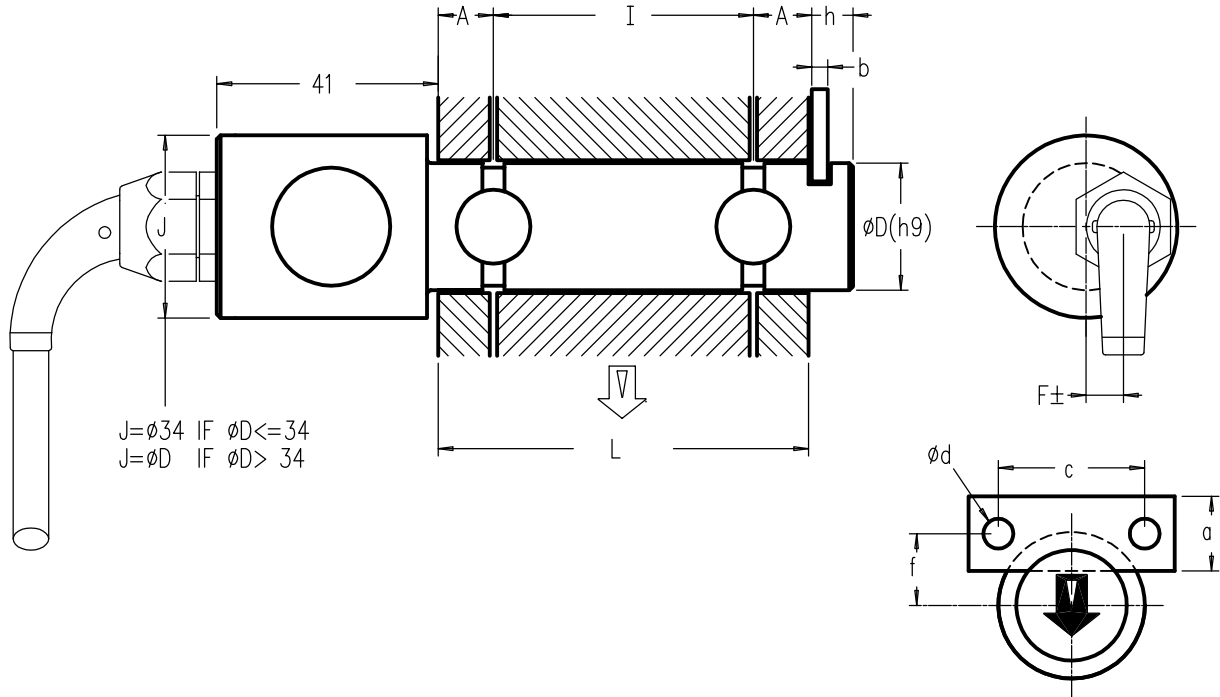
TECHNICAL DATA		
Accuracy class		SL
Combined error	% F.S.	1
Non - repeatability	% F.S.	< ± 0.25
Creep error over 30 min.	% F.S.	< ± 0.2
Zero shift after loading	% F.S.	< ± 0,05
Reference temperature	°C	23
Nominal temperature range	°C	- 10...+ 45
Service temperature range	°C	- 30...+ 70
Storage temperature range	°C	- 50...+ 85
Temperature coefficient of the sensitivity	% /10°C	< ± 0.1
Temperature coefficient of zero signal	% F.S./10°C	< ± 0.1
Nominal sensitivity	mV/V	± 1
Zero balance	mV/V	± 0.02
Sensitivity tolerance (g=9,8107 m/s ²)	%	< ± 0.5
Input / Output resistance	Ohm	350 ± 20
Insulation resistance (50V)	MOhm	> 5000
Nominal excitation voltage	V	5 to 10
Nominal excitation voltage	V	2...15
Safe load limit	% F.S.	200
Breaking load	% F.S.	> 200...500
Static lateral force limit	% F.S.	> 300
Permissible dynamic loading	% F.S.	70

F.S.: full scale Specifications subject to change without notice

LOAD CELLS

CE (Hoisting)

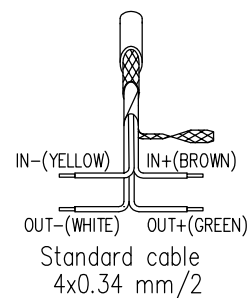
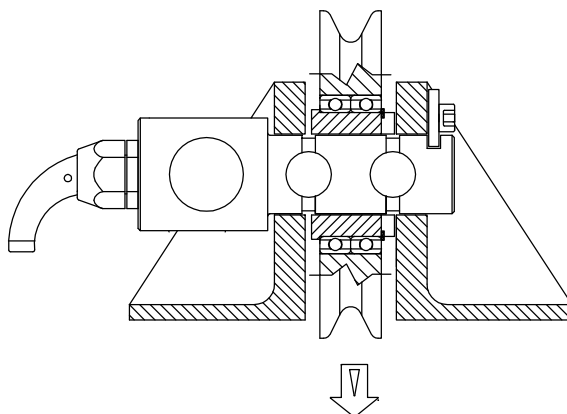
model 5600 stainless steel
 Range 0.5 – 6.3 t. IP65
DOUBLE SHEAR BEAM AXLE
 Cable length : 6 m



REFERENCE DIMENSIONS											
CAP.(t.)	A min	I min-max	b	h	ØD(h9)	F	f	a	c	Ød	
0.5	* 7...10	20-100	6	12	20	6	18	25	50	10	
1.5	12	25-160			30						22
2		32			23						
3		36			24						
4		39			25.5						
6.3		25.5									

STANDARD DIMENSIONS	
RANGE ØD	a,b,c,Ød,h,f
18 – 25	Depending directly on the diameter according to DIN 15058 Complete list with the different parameters available on request
20 – 35	
24 – 39	
28 – 39	
32 – 39	
36 – 39	

* Depend on capacity



Cable screen not connected to transducer
 Option f : Cable screen connected to transducer
 (6 wires cable in option)

Rev.11/03/97 C